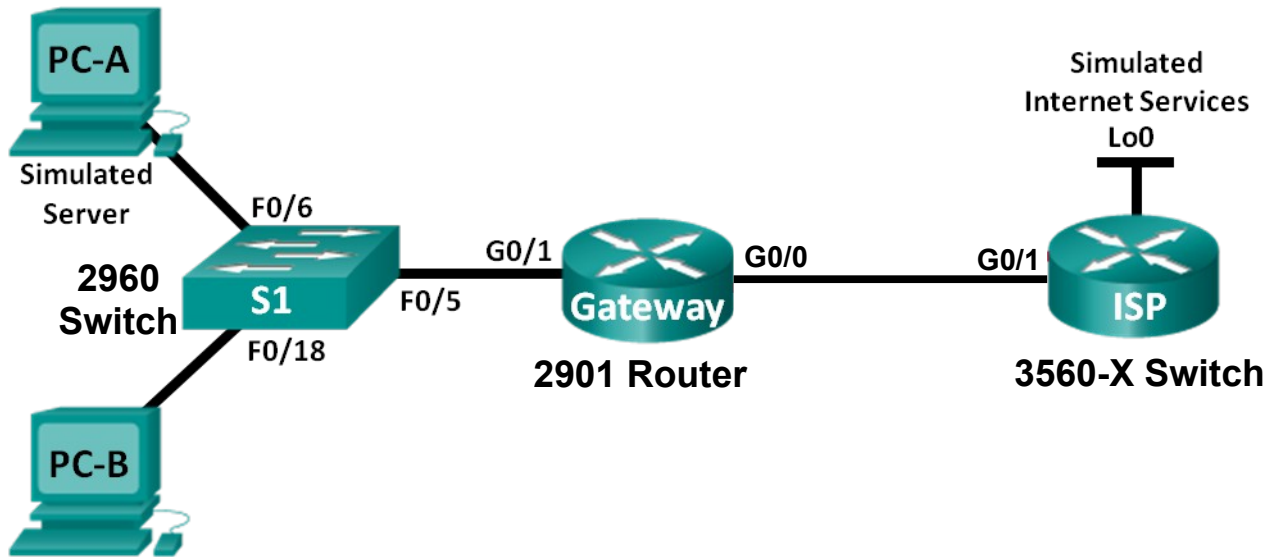


# Lab 11 – Configuring Dynamic and Static NAT

## Topology



## Addressing Table

Device	Interface	IP Address	Subnet Mask	Default Gateway
Gateway	G0/1	192.168.1.1	255.255.255.0	N/A
	G0/0	209.165.201.18	255.255.255.252	N/A
ISP	G0/1	209.165.201.17	255.255.255.252	N/A
	Lo0	192.31.7.1	255.255.255.255	N/A
PC-A (Simulated Server)	NIC	192.168.1.20	255.255.255.0	192.168.1.1
PC-B	NIC	192.168.1.21	255.255.255.0	192.168.1.1

## Objectives

**Part 1: Build the Network and Verify Connectivity**

**Part 2: Configure and Verify Static NAT**

**Part 3: Configure and Verify Dynamic NAT**

**CHECKPOINT #1 – Step 3E**

**CHECKPOINT #2 – Step 6C**

## Background / Scenario

Network Address Translation (NAT) is the process where a network device, such as a Cisco router, assigns a public address to host devices inside a private network. The main reason to use NAT is to reduce the number of public IP addresses that an organization uses because the number of available IPv4 public addresses is limited.

In this lab, an ISP has allocated the public IP address space of 209.165.200.224/27 to a company. This provides the company with 30 public IP addresses. The addresses, 209.165.200.225 to 209.165.200.241, are for static allocation and 209.165.200.242 to 209.165.200.254 are for dynamic allocation. A static route is used from the ISP to the gateway router, and a default route is used from the gateway to the ISP router. The ISP connection to the Internet is simulated by a loopback address on the ISP router.

**Note:** Make sure that the routers and switch have been erased and have no startup configurations.

### Part 1: Build the Network and Verify Connectivity

In Part 1, you will set up the network topology and configure basic settings, such as the interface IP addresses, static routing, device access, and passwords.

#### Step 1: Cable the network as shown in the topology.

Attach the devices as shown in the topology diagram, and cable as necessary.

#### Step 2: Configure PC hosts.

#### Step 3: Initialize and reload the routers and switches as necessary.

– Set IPv4 address, subnet, and GW manually. Remove the DNS setting for less "noise".

#### Step 4: Configure basic settings for each router.

- a. Console into the router and enter global configuration mode.
- b. Copy the following basic configuration and paste it to the running-configuration on the router.

```
no ip domain-lookup
service password-encryption
enable secret class
banner motd #
Unauthorized access is strictly prohibited. #
line con 0
password cisco
login
logging synchronous
line vty 0 4
password cisco
login
```
- c. Configure the host name according to the NET2000 standard: (must include your Algonquin NetID)
- d. On the 3560-X switch, convert the interfaces to routed mode and turn on routing capability:

```
(config)# ip routing
(config)# interface G0/1
(config-if)# no switchport
(config-if)# exit
```

#### Step 5: Create a simulated web server on ISP.

- a. Create a local user named **cisco** with an encrypted password of **class**.

```
ISP(config)# username cisco privilege 15 secret class
```
- b. Enable the HTTP server service on ISP.

```
ISP(config)# ip http server
```
- c. Configure the HTTP service to use the local user database.

```
ISP(config)# ip http authentication local
```

**Step 6: Configure static routing.**

- a. Create a static route from the ISP router to the Gateway router using the assigned public network address range 209.165.200.224/27.

```
ISP(config)# ip route 209.165.200.224 255.255.255.224 209.165.201.18
```

- b. Create a default route from the Gateway router to the ISP router.

```
Gateway(config)# ip route 0.0.0.0 0.0.0.0 209.165.201.17
```

**Step 7: Verify network connectivity.**

- a. From the PC hosts, ping the G0/1 interface on the Gateway router. Troubleshoot if the pings are unsuccessful.
- b. Display the routing tables on both routers to verify that the static routes are in the routing table and configured correctly on both routers.

**Part 2: Configure and Verify Static NAT**

Static NAT uses a one-to-one mapping of local and global addresses, and these mappings remain constant. Static NAT is particularly useful for web servers or devices that must have static addresses that are accessible from the Internet.

**Step 1: Configure a static mapping.**

A static map is configured to tell the router to translate between the private inside server address 192.168.1.20 and the public address 209.165.200.225. This allows a user from the Internet to access PC-A. PC-A is simulating a server or device with a constant address that can be accessed from the Internet.

```
Gateway(config)# ip nat inside source static 192.168.1.20 209.165.200.225
```

**Step 2: Specify the interfaces.**

Issue the **ip nat inside** and **ip nat outside** commands to the interfaces.

```
Gateway(config)# interface g0/1
Gateway(config-if)# ip nat inside
Gateway(config-if)# interface g0/0
Gateway(config-if)# ip nat outside
```

**Step 3: Test the configuration.**

- a. Display the static NAT table by issuing the **show ip nat translations** command.

```
Gateway# show ip nat translations
Pro Inside global      Inside local      Outside local      Outside global
--- 209.165.200.225    192.168.1.20     ---                ---
```

What is the translation of the Inside local host address?

192.168.1.20 = \_\_\_\_\_

The Inside global address is assigned by?

\_\_\_\_\_

The Inside local address is assigned by?

\_\_\_\_\_

## Lab 11 – Configuring Dynamic and Static NAT

- b. From PC-A, ping the Lo0 interface (192.31.7.1) on ISP. If the ping was unsuccessful, troubleshoot and correct the issues. On the Gateway router, display the NAT table.

```
Gateway# show ip nat translations
Pro Inside global      Inside local      Outside local     Outside global
icmp 209.165.200.225:1 192.168.1.20:1   192.31.7.1:1     192.31.7.1:1
--- 209.165.200.225    192.168.1.20     ---               ---
```

A NAT entry was added to the table with ICMP listed as the protocol when PC-A sent an ICMP request (ping) to 192.31.7.1 on ISP.

What port number was used in this ICMP exchange? \_\_\_\_\_

- c. From PC-A, telnet to the ISP Lo0 interface and display the NAT table.

```
Pro Inside global      Inside local      Outside local     Outside global
icmp 209.165.200.225:1 192.168.1.20:1   192.31.7.1:1     192.31.7.1:1
tcp  209.165.200.225:1034 192.168.1.20:1034 192.31.7.1:23    192.31.7.1:23
--- 209.165.200.225     192.168.1.20     ---               ---
```

**Note:** The NAT for the ICMP request may have timed out and been removed from the NAT table.

What was the protocol used in this translation? \_\_\_\_\_

What are the port numbers used?

Inside global / local: \_\_\_\_\_

Outside global / local: \_\_\_\_\_

- d. Because static NAT was configured for PC-A, verify that pinging from ISP to PC-A at the static NAT public address (209.165.200.225) is successful.

**Note:** It may be necessary to **disable the PC-A firewall** for the ping to be successful.

- e. On the Gateway router, display the NAT table to verify the translation.

```
Gateway# show ip nat translations
Pro Inside global      Inside local      Outside local     Outside global
icmp 209.165.200.225:12 192.168.1.20:12  209.165.201.17:12 209.165.201.17:12
--- 209.165.200.225    192.168.1.20     ---               ---
```

Notice that the Outside local and Outside global addresses are the same. This address is the ISP remote network source address. For the ping from the ISP to succeed, the Inside global static NAT address 209.165.200.225 was translated to the Inside local address of PC-A (192.168.1.20).

- f. Verify NAT statistics by using the **show ip nat statistics** command on the Gateway router.

```
Gateway# show ip nat statistics
Total active translations: 2 (1 static, 1 dynamic; 1 extended)
Peak translations: 2, occurred 00:02:12 ago
Outside interfaces:
  GigabitEthernet0/2
Inside interfaces:
  GigabitEthernet0/1
Hits: 39 Misses: 0
CEF Translated packets: 39, CEF Punted packets: 0
Expired translations: 3
Dynamic mappings:

Total doors: 0
Appl doors: 0
Normal doors: 0
Queued Packets: 0
```

CEF = Processed in hardware  
i.e. in the data plane

**Note:** This is only a sample output. Your output may not match exactly.

### Part 3: Configure and Verify Dynamic NAT

Dynamic NAT uses a pool of public addresses and assigns them on a first-come, first-served basis. When an inside device requests access to an outside network, dynamic NAT assigns an available public IPv4 address from the pool. Dynamic NAT results in a many-to-many address mapping between local and global addresses.

#### Step 1: Clear NATs.

Before proceeding to add dynamic NATs, clear the NATs and statistics from Part 2.

```
Gateway# clear ip nat translation *
Gateway# clear ip nat statistics
```

#### Step 2: Define an access control list (ACL) that matches the LAN private IP address range.

ACL 1 is used to allow 192.168.1.0/24 network to be translated.

```
Gateway(config)# access-list 1 permit 192.168.1.0 0.0.0.255
```

#### Step 3: Verify that the NAT interface configurations are still valid.

Issue the **show ip nat statistics** command on the Gateway router to verify the NAT configurations.

#### Step 4: Define the pool of usable public IP addresses.

```
Gateway(config)# ip nat pool public_access 209.165.200.242 209.165.200.254
netmask 255.255.255.224
```

#### Step 5: Define the NAT from the inside source list to the outside pool.

**Note:** NAT pool names are case-sensitive and the pool name entered here must match that used in the previous step.

```
Gateway(config)# ip nat inside source list 1 pool public_access
```

**Step 6: Test the configuration.**

- a. From PC-B, ping the Lo0 interface (192.31.7.1) on ISP. If the ping was unsuccessful, troubleshoot and correct the issues. On the Gateway router, display the NAT table.

```
Gateway# show ip nat translations
Pro Inside global      Inside local      Outside local      Outside global
--- 209.165.200.225    192.168.1.20      ---                ---
icmp 209.165.200.242:1 192.168.1.21:1    192.31.7.1:1      192.31.7.1:1
--- 209.165.200.242    192.168.1.21      ---                ---
```

What is the translation of the Inside local host address for PC-B?

192.168.1.21 = \_\_\_\_\_

A dynamic NAT entry was added to the table with ICMP as the protocol when PC-B sent an ICMP message to 192.31.7.1 on ISP.

What port number was used in this ICMP exchange? \_\_\_\_\_

- b. From PC-B, open a browser and enter the IP address of the ISP-simulated web server (Lo0 interface). When prompted, log in as **cisco** with a password of **class**.
- c. Display the NAT table.

```
Pro Inside global      Inside local      Outside local      Outside global
--- 209.165.200.225    192.168.1.20      ---                ---
tcp 209.165.200.242:1038 192.168.1.21:1038 192.31.7.1:80      192.31.7.1:80
tcp 209.165.200.242:1039 192.168.1.21:1039 192.31.7.1:80      192.31.7.1:80
tcp 209.165.200.242:1040 192.168.1.21:1040 192.31.7.1:80      192.31.7.1:80
tcp 209.165.200.242:1041 192.168.1.21:1041 192.31.7.1:80      192.31.7.1:80
tcp 209.165.200.242:1042 192.168.1.21:1042 192.31.7.1:80      192.31.7.1:80
tcp 209.165.200.242:1043 192.168.1.21:1043 192.31.7.1:80      192.31.7.1:80
tcp 209.165.200.242:1044 192.168.1.21:1044 192.31.7.1:80      192.31.7.1:80
tcp 209.165.200.242:1045 192.168.1.21:1045 192.31.7.1:80      192.31.7.1:80
tcp 209.165.200.242:1046 192.168.1.21:1046 192.31.7.1:80      192.31.7.1:80
tcp 209.165.200.242:1047 192.168.1.21:1047 192.31.7.1:80      192.31.7.1:80
tcp 209.165.200.242:1048 192.168.1.21:1048 192.31.7.1:80      192.31.7.1:80
tcp 209.165.200.242:1049 192.168.1.21:1049 192.31.7.1:80      192.31.7.1:80
tcp 209.165.200.242:1050 192.168.1.21:1050 192.31.7.1:80      192.31.7.1:80
tcp 209.165.200.242:1051 192.168.1.21:1051 192.31.7.1:80      192.31.7.1:80
tcp 209.165.200.242:1052 192.168.1.21:1052 192.31.7.1:80      192.31.7.1:80
--- 209.165.200.242    192.168.1.22      ---                ---
```

What protocol was used in this translation? \_\_\_\_\_

What port numbers were used?

Inside: \_\_\_\_\_

Outside: \_\_\_\_\_

What well-known port number and service was used? \_\_\_\_\_

Can static NAT co-exist with dynamic NAT? \_\_\_\_\_

Can the address(es) overlap between static and dynamic NAT? \_\_\_\_\_

- d. Verify NAT statistics by using the **show ip nat statistics** command on the Gateway router.

```
Gateway# show ip nat statistics
Total active translations: 3 (1 static, 2 dynamic; 1 extended)
Peak translations: 17, occurred 00:06:40 ago
Outside interfaces:
  GigabitEthernet0/2
Inside interfaces:
  GigabitEthernet0/1
Hits: 345 Misses: 0
CEF Translated packets: 345, CEF Punted packets: 0
Expired translations: 20
Dynamic mappings:
-- Inside Source
[Id: 1] access-list 1 pool public_access refcount 2
  pool public_access: netmask 255.255.255.224
    start 209.165.200.242 end 209.165.200.254
    type generic, total addresses 13, allocated 1 (7%), misses 0

Total doors: 0
Appl doors: 0
Normal doors: 0
Queued Packets: 0
```

CEF = Processed in hardware  
i.e. in the data plane



**Note:** This is only a sample output. Your output may not match exactly.

**Step 7: Remove the static NAT entry.**

In Step 7, the static NAT entry is removed and you can observe the NAT entry.

- a. Remove the static NAT from Part 2. Enter **yes** when prompted to delete child entries.

```
Gateway(config)# no ip nat inside source static 192.168.1.20 209.165.200.225
```

```
Static entry in use, do you want to delete child entries? [no]: yes
```

- b. Clear the NATs and statistics.
- c. Ping the ISP (192.31.7.1) from both hosts.

d. Display the NAT table and statistics.

```
Gateway# show ip nat statistics
Total active translations: 4 (0 static, 4 dynamic; 2 extended)
Peak translations: 15, occurred 00:00:43 ago
Outside interfaces:
  GigabitEthernet0/2
Inside interfaces:
  GigabitEthernet0/1
Hits: 16 Misses: 0
CEF Translated packets: 285, CEF Punted packets: 0
Expired translations: 11
Dynamic mappings:
-- Inside Source
[Id: 1] access-list 1 pool public_access refcount 4
  pool public_access: netmask 255.255.255.224
    start 209.165.200.242 end 209.165.200.254
    type generic, total addresses 13, allocated 2 (15%), misses 0

Total doors: 0
Appl doors: 0
Normal doors: 0
Queued Packets: 0
```

CEF = Processed in hardware  
i.e. in the data plane



```
Gateway# show ip nat translation
Pro Inside global      Inside local      Outside local      Outside global
icmp 209.165.200.243:512 192.168.1.20:512 192.31.7.1:512    192.31.7.1:512
--- 209.165.200.243    192.168.1.20      ---                ---
icmp 209.165.200.242:512 192.168.1.21:512 192.31.7.1:512    192.31.7.1:512
--- 209.165.200.242    192.168.1.21      ---                ---
```

**Note:** This is only a sample output. Your output may not match exactly.

### Reflection

1. Why would NAT be used in a network?

---

---

---

2. What are the limitations of NAT?

---

---

---